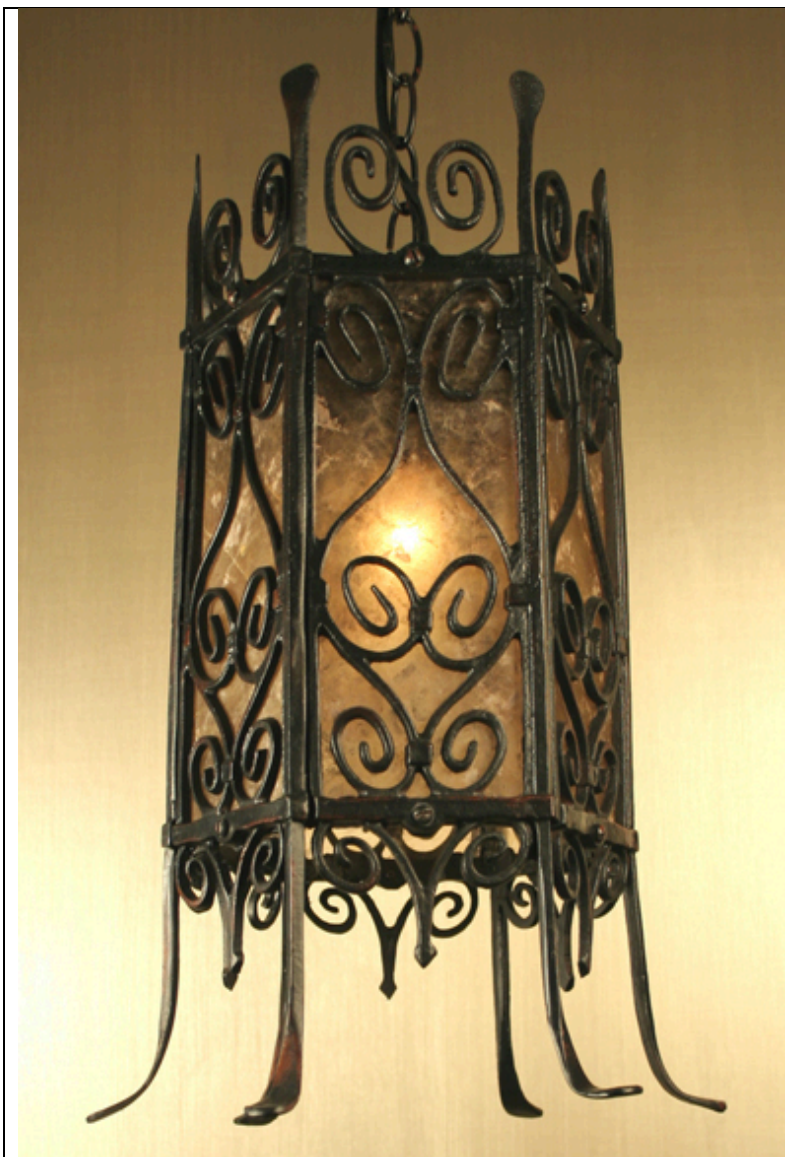


20th Century Lighting

5729 Venice Blvd., Los Angeles, CA 90019

www.20thCenturyLighting.com

2018 - Tripoli



SPECIFICATIONS

Overall Width: 10" diagonal

Height w/o Chain: 16-3/4"

Chain Length: 24"

Canopy: 5" dia

Weight: 8 lbs

Lamp: (1) 60 w Max Med Base

Max J-Box: 4" dia

Installation Instr: F

Quick Ship: Yes

Shown in Worn Blackened Paint